

Frequently Asked Questions

What is Metro Early College High School?

Metro Early College High School is a small and intellectually vibrant learning community open to students in Franklin County. Metro is designed to serve students who want an extraordinary learning experience that prepares them for a connected world where math, science and technology are vitally important. All Metro students engage in a personally relevant and academically rigorous curriculum within a safe and trusting environment.

Where is Metro?

Metro is located in the research park adjacent to The Ohio State University campus at 1929 Kenny Road.

When is Metro at full capacity?

Metro will always be a small school. One hundred students will be added each year until the school reaches maximum enrollment in 2009.

Enrollment will be phased as follows:

Fall 2006	Ninth Grade	100 students
Fall 2007	Ninth and Tenth Grade	200 Students
Fall 2008	Ninth, Tenth, Eleventh Grades	300 Students
Fall 2009	Ninth, Tenth, Eleventh, Twelfth Grades	400 Students

What is the school calendar?

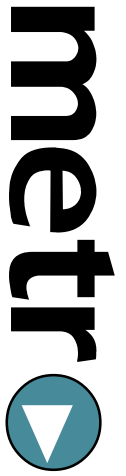
Metro will follow a traditional calendar that begins and ends the year at approximately the same date as the 16 Franklin County school districts. Metro will also provide special opportunities for summer enrichment.

Is Metro a charter school?

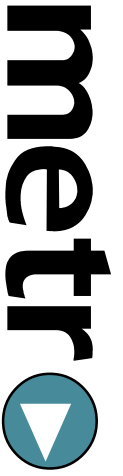
No. It is a public school option operated by the Education Council - a confederation of the 16 public school districts in Franklin County. Students who attend Metro will be concurrently enrolled in their home district and are part of the public school system.

What is Metro's academic focus?

Metro's academic focus is to prepare all students for success in college, build capacity in science, math, and technology and feed their aspirations to make a difference in the world.



Your Potential. Our Mission.sm



Your Potential. Our Mission.sm

What is Metro?

- Long blocks of time in integrated courses of study allow for deep inquiry and the development of strong student-teacher relationships.
- Students are provided extensive feedback about what the student is doing well, where the student needs to improve, and suggestions on how to improve.
- The advisory program assures that each student has an adult who serves as a student advocate.
- A collection of learning centers established across the community are available to students during their junior and senior years.

What do you mean by a “safe” school?

At Metro, the issue of safety goes well beyond physical safety. Students, staff, and administration are responsible for maintaining an atmosphere of physical, emotional, and intellectual safety. This requires everyone in the Metro community to become aware of how words, looks, and actions may hamper intellectual and emotional maturity.

Is the school accountable for the Ohio Graduation Tests (OGT) and graduation requirements?

The Metro School is standards driven and performance based. Each student - with his or her family or adult advocate and a Metro advisor- formulates a personalized learning plan targeted at successful performance on the OGT and specific graduation requirements for his or her “home school”. The Metro staff will work with the home district to ensure credit transfer and attainment of graduation requirements.

What is Metro’s administration and governance?

The Educational Council operates Metro Early College High School. The Educational Council Foundation manages the school’s finances. The Metro Partnership Group advises and assists the school staff on the program, school evaluation and research, professional development, funding, and community relations. Seven members will serve on the Metro Partnership Group, including three from OSU, three from the Educational Council, and one from Battelle. Metro’s Principal and staff will oversee the day-to-day operation of the school.

How will Metro involve the students and parents in the operation of the school?

The students and parents decide through the Town Meeting process many of the policies and procedures for the day-to-day operation of the school. We believe in participatory governance and have organized ourselves to honor each citizen of our learning community.

Metro also has a Parent, Student, Teacher Organization with representative participation from students and parents. They examine issues as they arise, assist the principal in the formulation of the warrants for the town meetings, and organize participation in key events associated with the school. The PTSO takes the lead in resource and development for the future of Metro.

How is Metro funded?

Metro has received significant support from Battelle, The Ohio State University, National Coalition of Essential Schools and The Knowledgeworks Foundation to design and open the school. Recurrent funding comes from districts whose students attend the school.

How is a student selected for admission to Metro?

First, students fill out a Metro application. Then a lottery is conducted for each district based upon the number of seats available. Students attend an interview held at the Metro School where they have an opportunity to see the school and ask questions to determine if Metro will be a good fit for them. This process will begin each year in early February. Students not initially selected are placed on a "waiting list" so that if an opening becomes available, the student can be selected for placement at Metro.

What is Metro's educational philosophy?

Metro is guided by the Ten Common Principles of the Coalition of Essential Schools. These ten principles are inspiring high school redesign across the nation. The Ten Common Principles are:

1. The school's central intellectual purpose is helping students to use their minds well.
2. An essential body of knowledge, skills, and disposition will be identified for student mastery.
3. The school's goals apply to all students.
4. The school will be highly personalized.
5. A governing practical metaphor will be "student-as-worker, teacher-as-coach".
6. Teaching and learning will be documented by student performance on real tasks.
7. The tone of the school will be one of trust and decency.
8. The principal and teachers will act as generalists first and specialists second.
9. Resources will be modest and therefore positioned toward teaching and learning.
10. The school will emphasize democratic and fair practices.

How is the school organized for instruction?

The learning experience is divided into two distinct developmental phases: Core Preparation and College Readiness -

Division 1 - Core Prep: During the Core Preparation phase, the 9th and 10th grade student experience focuses on learning that promotes performance and mastery. To exit Core Preparation, students demonstrate performances in mathematics, science, social studies and language arts. This performance demonstration includes the successful passage of the Ohio Graduation Tests as well as performance tasks including a showcase of the student's ability to work both independently and in collaborative environments, and the capacity to investigate solutions to real world problems.

Division 2 - College Access: Upon successful mastery of Core Prep, the 11th and 12th grade students learn from a curriculum that is focused on "learning outside of the school walls" and the development of the students' capacity for successful college work. The design of the curriculum includes a series of learning centers located in settings across the central Ohio community. For example, a student may choose to further his or her talents and capacities for scientific inquiry through a math- and science-focused apprenticeship where he or she works with a scientist at Battelle. These experiences will go beyond traditional internships and will include problem solving, critical thinking and creative innovation.